

ÉCOLE SILVERSPRING SCHOOL



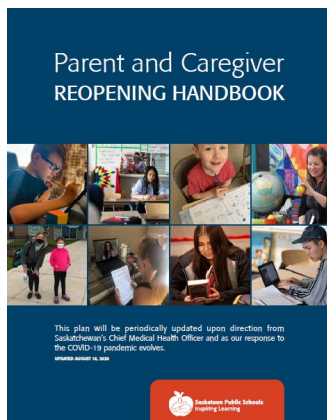
School Reopening Plan

Welcome back to a new school year! Please take the time to look over this important document that outlines our school reopening plan. These are the protocols and plans that are unique to our building.

Parent and Caregiver Reopening Handbook

Please refer to the [Parent and Caregiver Reopening Handbook](#) for general information on Saskatoon Public Schools reopening plan. This parent handbook provides detailed information on many important topics including:

Safety Precautions
Curriculum and Assessment
Support Services
Food and nutrition programs
Facilities
Students.



The guidelines of the Parent Handbook will be adhered to by our school along with elements specific to our school.

Please note that the plan is subject to change at any time based on the direction from Saskatchewan's Chief Medical Health Officer. Changes will be communicated as they occur. *updated March 2021

What to do when a child is sick?

Common symptoms may include one or more of the following:

-fever, cough, headaches, aches and pains, sore throat, chills, runny nose, I loss of sense of taste or smell, shortness of breath or difficulty breathing

Students who are **sick** must not attend school, parents/guardians are asked to phone, email or submit absence using School Messenger.

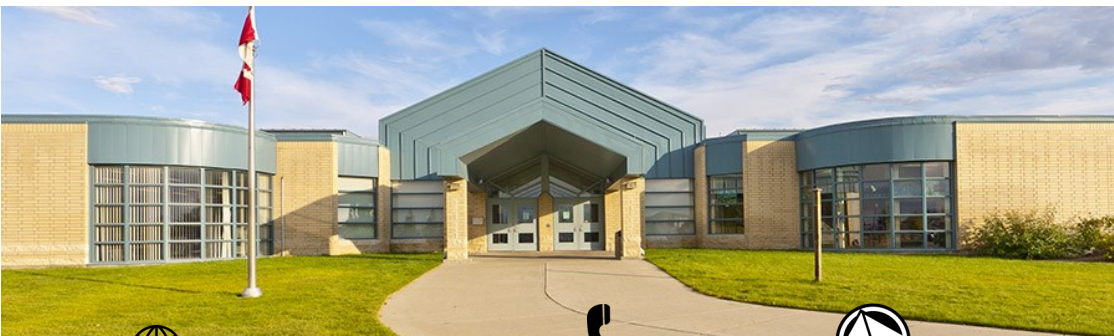
When a student displays any of these symptoms at school, the student's parents/caregivers will be contacted to pick up the student immediately. If a student becomes sick at school, there are two separate **isolation rooms** for the student to wait until they are picked up. The student will be supervised in the isolation room until picked up.

Follow these steps prior to your child's return to school:

1. Call **Healthline 811** for assistance and explain your child's symptoms. Follow the direction given on the phone from Public Health.
2. **If your child is referred for testing, they must remain home and self-isolate until they have received their results.** Public Health will provide instructions for your family.
3. If your child's **results are negative**, your child can return to school when they are symptom-free for 48 hours.
4. If your child's **results are positive**, Public Health will provide further instructions.
5. **If your child is not referred for a test, they must be symptom free for 48 hours before returning to school.**


Please note:

If your child returns to school and shows symptoms again, we will follow the same process. You can contact your homeroom teacher for the best way to access homework while they are away.



Website: 

<https://www.spsd.sk.ca/silverspring>

Phone: 

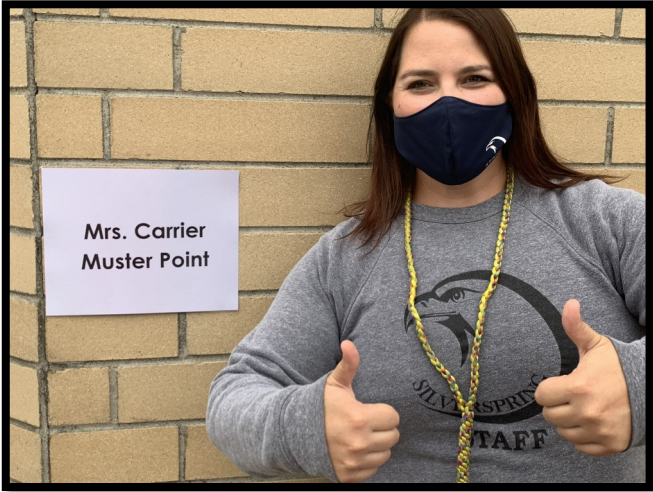
(306) 683-7900

Email: 

silverspring@spsd.sk.ca

What are pods? All classrooms have been divided into pods based on their location and class size. These groups will be assigned designated entry/exit doors, recess play areas and bathrooms.

Pod A Junior Bootroom	Pod B Junior Bootroom	Pod C Portable Bootroom	Pod D Front Door	Pod E Middle Years Tarmac	Pod F Side Tarmac
Aldorfer/ Hobday Burgess Beaubier <i>*uses own door</i>	Heggie/ Gunn Morrison	Fiander Hancherow Coben McMahon	Gordon-Dirks Scissons Hutchison/ Hobday	Carrier Halfinger	Olfert Ouattou Craig



What is a muster point? Each classroom is assigned a muster point. This is an outdoor area located by their assigned door. Students will meet here before and after school as well as after each recess. It is a large area with enough room to social distance.

Entering and Exiting the School

Students will go to their muster point before and after school as well as after every recess. Parents/caregivers may choose to drop off and pick up at this location. After recess, the supervising teacher will call each classroom in one at a time to enter the building starting with the class furthest down the hall. Students will sanitize as they enter. Students will exit in the same fashion, one class at a time with the class closest to the door exiting first.

Traffic Flow



There are arrows located throughout the school to help with traffic flow. Social distance spots are also used wherever students need to line up (bathroom, water fountain). Teachers will mark classrooms with smaller arrows to help with student movement in the classroom and limit physical contact.

Recess

All of the outdoor space that surrounds the school has been divided into 6 areas. Pods will be assigned to an outdoor area for the day. At recess, classroom teachers will lead their students outside one class at a time to play in their designated area. One teacher from that pod will supervise the students. At the end of recess, students will meet at their muster point and the supervising teacher will call in the classrooms one at a time. Kindergarten students will always have access to the small playground. Pods will rotate to different areas each day.

Lunch

Students are asked to stay home if possible. Each class is equipped with a spray bottle so desks/tables can be sanitized prior to lunch and after. Students will also be asked to wash or sanitize their hands before they eat. Families are asked to make sure that students can open any containers sent in their lunch. Students are also asked to pack waste free lunches where possible. Any garbage and/or recycling that their lunch creates will be sent home in their lunch boxes. This will help to limit the movement throughout the class. At this point, we will not be recycling at the school. We kindly ask that you recycle at home.

Parent/Caregiver Access

Parents/caregivers are asked to contact the main office if they need to drop something off at school or to make an appointment. All meetings are being held virtually or by phone. You may also email the staff member directly to arrange a meeting.

If a visitor must enter and has spoken to the principal, the following protocols must be adhered:

- Complete QR health questionnaire the day of entry
- Sanitize
- Wear a mask



ATTENTION
Parents/Caregivers and Visitors

You must complete the following:

- 1 **COVID-19 Questionnaire**—scan the QR code with your phone's camera to access it. The questionnaire must be completed the day of your visit.
- 2 Put on a **mask** before entering the school.
- 3 **Sanitize** your hands immediately upon entry.



Parking

Please note the changes in our parking loop. It is for buses only from 8:00AM-8:30AM and 2:45PM-3:15PM. Outside of these times, drivers can park for 15 minutes in the loop. The 'kiss and ride' on Konihowski is still an option for drop offs and pick ups. There is also parking on side streets.



Students are asked to walk or bike whenever possible to help reduce the traffic in front of the school.

Busing

Students will continue to be dropped off in the loop when taking the bus. They will then proceed to their muster point.

After school, students will immediately get on the bus. A bus supervisor will be outside to support this process and remind student that they are not to play on the park with students in other PODs.

****LP3 will provide more specific details***

In the morning, supervision begins at 8:20 AM so students must not arrive before this time. When they arrive, students need to head straight to their muster point and are asked not to play on the playground.

Storage of Student Materials

Classroom teachers will have time in the first week to sort school supplies with students. Each teacher will choose a plan that works best for their classroom. Personal supplies will not be shared amongst students. Students are asked to bring supplies on their first staggered start day.

Lockers

Students will not use lockers the first week of school. Each pod will create a system for safe locker use once other routines and procedures are solidified.

Bell Times

8:30 a.m. - warning bell
8:35 a.m. - school begins
10:20 a.m. - recess
11:25 a.m. - lunch
12:15 p.m. - school begins
1:55 p.m. - recess
3:00 p.m. - dismissal

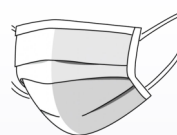


Hygiene & Washrooms

Hand washing posters will be posted at every sink. Staff will review hand washing procedures with students.

Pods will be assigned to separate bathrooms. During lunch and recess, students will be allowed to enter the bathroom with limited capacity. If a washroom is at capacity, students will wait outside on floor markings. During class time, teachers will monitor the number of students using the bathroom.

Masks - What Do I Need to Know?



- All students and staff are required to wear masks at all times in the school and on school property.
- All students are required to wear masks while riding the bus.
- All visitors must wear masks.
- Medical grade disposable masks are available but not mandatory.
- Saskatoon Public Schools will provide one reusable mask for each student. Additional masks will be made available to students when needed and required.
- Students are welcome to bring their own masks.
- In some situations, wearing a mask may not be possible for a student. In these instances, school staff members will work with parents/caregivers to consider accommodations. More information can be found on the [CDC website](#).
- Staff members will be provided with a reusable mask and face shield for use as needed. Staff members may also choose to use their own mask.
- More information about the proper usage of masks or face coverings is available from the [Public Health Agency of Canada](#).

Mental Health and Social-Emotional Supports

The well-being of our students is a major priority for us. It is important for families to know that students who need additional support for their well-being may receive support from the school counsellor. Parents who believe this support may be necessary can reach out to their teacher or administrator to discuss. The counsellor will work with the team to determine appropriate supports, which may include direct support and/or assisting students and families to access other services in the community.



Before/After School Program—Boys & Girls Club

This program is working closely with the principal to follow the school/division plans. Participants can review the program's plan but here are some main points:

- Staff and participants will need to wear a mask at all times.
- Group sizes will be kept to 15 whenever possible.
- Parents/caregivers will need to text or call for drop off and pick up to avoid entering the building.
- Frequent sanitizing and hand hygiene will take place.

LRC Reopening Plans (March, 2021)

**there are more detailed protocols for staff*

At this time, only POD B, D, E and F will begin borrowing books from the LRC. It will be important to follow the guidelines below.

1. Any books that are returned will need to be quarantined for 24 hours prior to handling and re-shelving.
2. Students will visit the library only on their POD day.
3. Students can borrow up to 2 books and an additional magazine for each visit.
4. We need to limit the traffic flow of the library and avoid congestion. Each class will assign students in partners. One student will browse while their partner will remain seated at a table. Once the first partner has selected a book, they will proceed to the check out. Once their partner is in the check-out line, the table student can begin to browse.
5. Teachers are asked to talk to students about looking with their eyes and limiting their touch of the books.
6. Proper sanitizing of hands and tables must occur.
7. Properly trained teachers (or EAs) will need to sign out materials.

*We are looking forward to a great year at
École Silverspring School!*